



# GMT MONTHLY MEMBERSHIP PROGRESS REPORT

Results as of: 3/31/2019

Multiple District 29

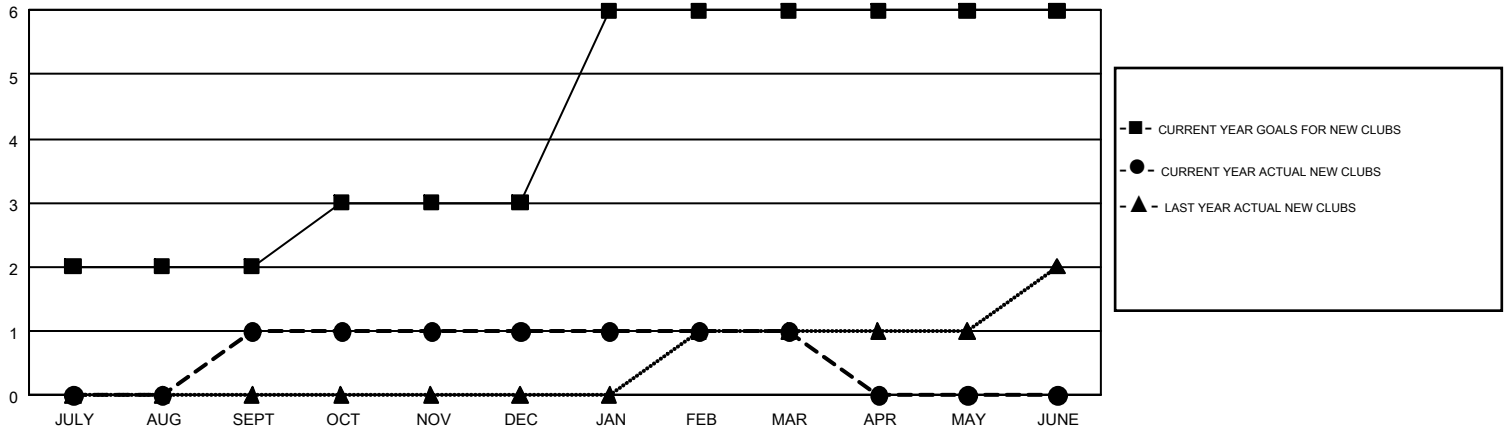
LOCATION: WEST VIRGINIA

GMT: CINDY GREGG

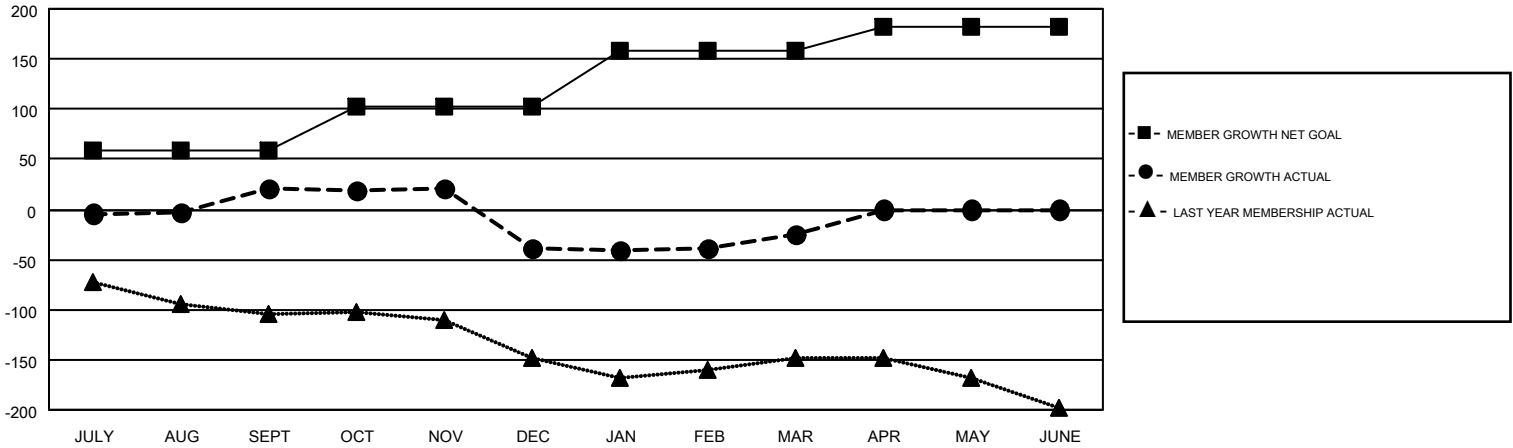
GMT CA 1

| Clubs                 |               |           |               | Members               |                        |                      |  |
|-----------------------|---------------|-----------|---------------|-----------------------|------------------------|----------------------|--|
| RESULTS FOR 2018-2019 |               |           |               | RESULTS FOR 2018-2019 |                        |                      |  |
| QUARTER               | NEW CLUB GOAL | NEW CLUBS | DROPPED CLUBS | QUARTER               | MEMBER GROWTH NET GOAL | MEMBER GROWTH ACTUAL | DROPPED MEMBERS ACTUAL (including transfers) |
| JULY/AUG/SEPT         | 2             | 1         | 1             | JULY/AUG/SEPT         | 59                     | 99                   | 65   |
| OCT/NOV/DEC           | 1             | 0         | 0             | OCT/NOV/DEC           | 44                     | 66                   | 114  |
| JAN/FEB/MAR           | 3             | 0         | 1             | JAN/FEB/MAR           | 55                     | 95                   | 79   |
| APR/MAY/JUNE          | 0             | 0         | 0             | APR/MAY/JUNE          | 24                     | 0                    | 0  |

GOALS AND ACTUAL NEW CLUBS CUMULATIVE



GOALS AND ACTUAL MEMBERS CUMULATIVE



|                        |   |   |                |
|------------------------|---|---|----------------|
| DROPPED CLUBS: 2       | 92 CLUBS OF 170 ADDED 1 OR MORE NEW MEMBERS | <u>GENDER DISTRIBUTION</u>                                |                |
| <u>DROPPED MEMBERS</u> |   | MALE  | 2,659 (65.35%) |
| DECEASED               | 55  | FEMALE  | 1,410 (34.65%) |
| CLUB CANCELLED         | 0   | TOTAL FAMILY UNIT MEMBERS                                 | 1,190          |
| OTHER                  | 203   | FAMILY MEMBERS PAYING HALF DUES                           | 607            |
| TOTAL                  | 258   | <a href="#">CLICK HERE FOR CUMULATIVE MEMBERSHIP DATA</a> |                |